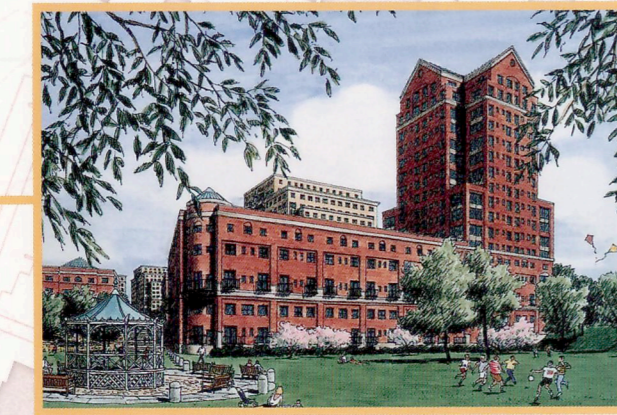


Reedy River Corridor Vision Plan



At approximately 80 acres, this proposed new park would be on the scale of Central Park, featuring broad-scale activities such as play fields, extensive trails and formal outdoor events. By realigning Mayberry Street to connect with a new Park Drive, and by reintroducing meanders to the River, additional park space is created for large geographic features, such as a new pond and children's wading pool.



Cleveland Park East

The Vision Plan recommends that the Cleveland Park tributary be enhanced with canopy trees, trails, footbridges and a southern vehicular drive. A linear parking area replaces the larger existing lots to allow more open space north of the tributary, and encourages a continuous street tree edge along Cleveland Park Drive.

Four smaller meadows and picnic areas are provided adjacent to the parking, along with children's play areas. An additional woodland play area is located on the southern hillside.



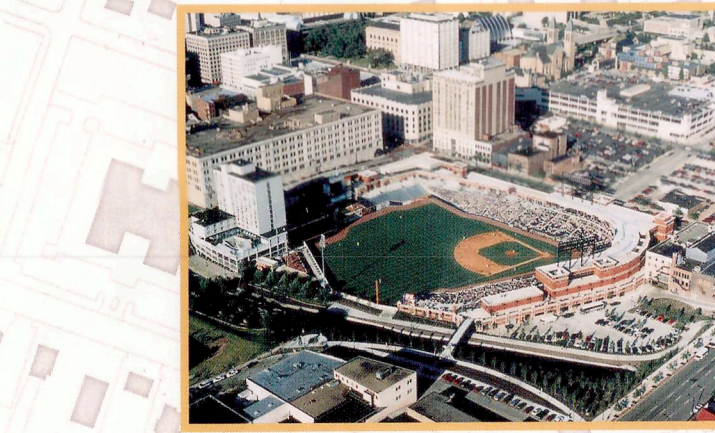
Riverplace

This master plan recommends a civic water feature and fountain attraction to be placed on the south bank of the Reedy River. These fountains will create sophisticated light and water performances which can be easily viewed from the Peace Center amphitheater, the Main Street Bridge, the River Street Bridge, and the proposed linear park.



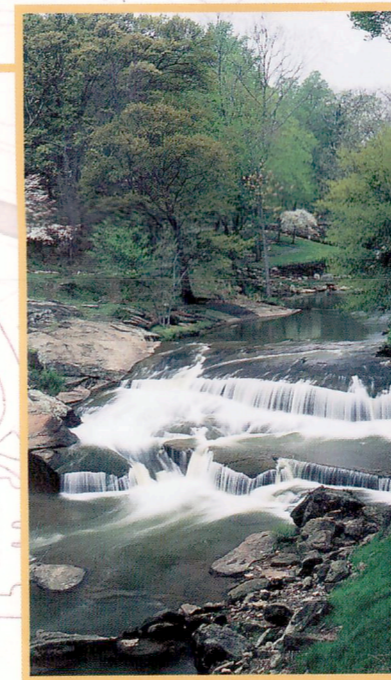
The downtown Greenville section of the Reedy River Corridor has the potential to be one of the finest public urban open spaces for high-quality mixed use and civic development in the region and nation. The Corridor can become a common ground useful to Greenvilleans in their daily lives inviting, animating and contributing to civic life in Greenville and the Upstate region. Moreover, the improved Corridor represents a tremendous regional amenity with physical assets that can be a source of great civic pride while attracting visitors, tourists, conventioners, and business people to extend their stay in Greenville and return more frequently.

The "Master Vision for the Reedy River Corridor" was developed by a comprehensive and inclusive planning process sponsored by the Leadership Greenville Class XXIV during the summer and fall of 1998. The purpose of the Vision Plan is to achieve the development of the Corridor as a high-quality destination for business, residential, recreational and visitor interests. Another goal of the Vision Plan is to provide a planning and development framework for the Corridor by identifying specific physical development improvements that will enable the Corridor to become a first-rate public open space and mixed use urban district.



Falls Historic Park

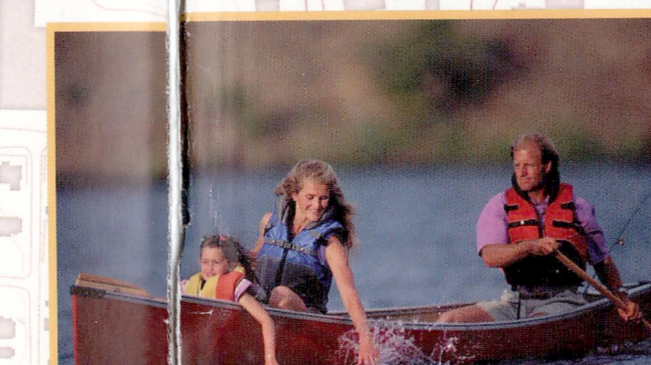
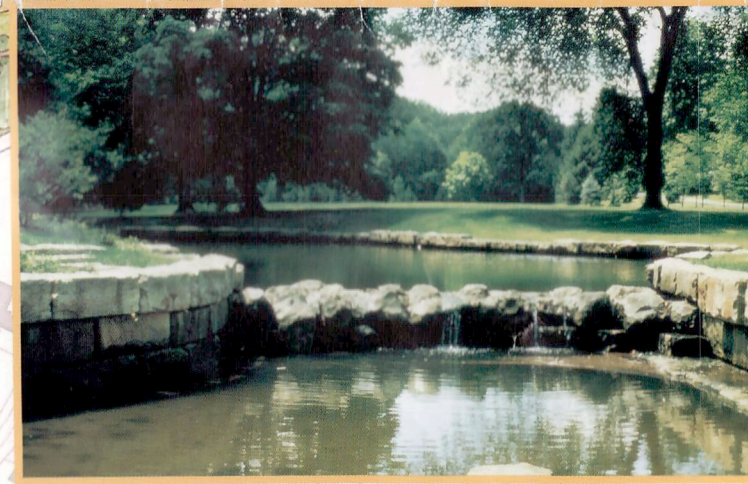
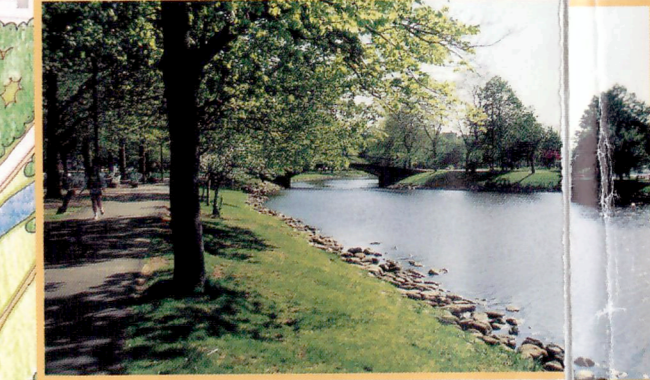
The Vision Plan develops this area as a woodland park, weaving in plans for a small arboretum and simplifying existing historic markers and small gathering spaces. The plan also recommends removing Camperdown Bridge to restore the beauty and dignity of the Great Falls.



Country Square

Woodland Park

The linear stretch of parkway that lies to the west, Cleveland Park to the east and the south should be maintained as a walking, cycling and jogging area. Additional bridges should be added to improve river crossings. Picnic shelters and small play areas also should be constructed along the River to the neighborhoods and accompanied by small parking areas.



SASAKI



REEDY RIVER DEVELOPMENT CORPORATION

This plan recommends linking the park to Greenville Technical College and to Green Forest Park.